

## IN THIS ISSUE

- Upcoming Exhibitions and Events
- Create from a Crate 2014 Members Meeting Report by Andrew Potocnik.
- Create from a Crate People's Choice Award Winner.
- Kathy Holowko and the Mobile Children's Gallery, Royal Children's Hospital.
- Add your name to the Custom Work referral service
- For Sale

## UPCOMING EXHIBITIONS AND EVENTS

**April 23<sup>rd</sup> at 7:30 pm. A lecture by Dan Wollmering.**

**Venue: Arts House Meat Market Meeting room, 5 Blackwood Street North Melbourne. 3051.**



Born in St. Paul Minnesota, Dan Wollmering immigrated to Australia in 1975. Since then, he has held 25 solo exhibitions and participated in over 45 group exhibitions in Australia and internationally including the 7th, 8th and 9th *Mildura Sculpture Triennials* and the 1st and 3rd *Australian Sculpture Triennials*.

In Australia, his work is represented in public and corporate collections including regional galleries and universities. He has exhibited in China, Japan and the USA with work in public collections. His research interests and practice include: *abstract form in the age of complexity; synergies between sculpture, architecture and engineering* and *public sculpture as political/socio commentary*. He has worked in a variety of mediums with specialist expertise in: wood & steel fabrication, metal casting - including liaison with industry cutting-edge technologies: CNC milling, 3-D printing and laser metal cutting.

<http://www.artdes.monash.edu.au/fineart/people.php#!/fineart/people/dr-dan-wollmering.html>.

This is a meeting not to be missed. Catering will be provided by the VWA.

**May 11<sup>th</sup> from 1pm to 5 pm. CNC Routing Workshop**

*VWA welcomes all members to a 3D CNC routing workshop demonstration at the Wood Design Centre, 5 Tyrone Street, North Melbourne.*

*The workshop will cover all of the steps from:*

- *initially creating your 3D file in Rhino or other packages*
- *file formats and accuracy*
- *CAM tool path software and creation*
- *Stock setup and securing on the bed.*
- *Running a 3D project on the VWA CNC machine.*



*Look forward to seeing you there. Places are limited to 20 so please RSVP to Sam Johnston at [sam@semdesign.com.au](mailto:sam@semdesign.com.au).*

## May 20th at 7:30 pm. Workshop Visit

The VWA has organized a visit to the Construction Workshop at the Faculty of Architecture Building and Planning, University of Melbourne, run by the inimitable and irrepressible Hamish Hill.

### Venue:

It is currently downstairs on the corner of Grattan and Swanston Streets (Room 104D, Building 199, 757 Swanston Street).



Hamish says they'll also have a fair bit of student work on show then, so it should be an interesting trip.

## Date to be advised. Oils ain't Oils

Ray Bellette of Natural Timber Oils has invited the VWA members to his warehouse for a talk about the finer points of natural oil finishes on timber.



He supplies a range of products, including Organ Oil and Osmo Oil.

### Venue:

18 Mercedes Drive

Thomastown

Melbourne Vic 3074

<http://www.naturaltimberoils.com.au/>



## Create from a Crate Member's Meeting 18<sup>th</sup> February

By Andrew Potocnik



The last monthly meeting was held on the 18<sup>th</sup> February, at the Hatch Gallery in Ivanhoe. At least a dozen exhibiting makers were on hand to spend five minutes presenting to the sixty-plus attendees with a rare insight into what drives their urge to convert waste wood into high quality products. Each and every maker provided a new insight into how we can view a material that is most likely considered of no use at all –waste, for some!



*Create from a Crate* is the re-incarnation of a concept explored several times over the last decade driven by Ward Petherbridge, Managing Director of a waste recycling company based in Dandenong. Ward deals with tonnes of material that has fulfilled its use in the modern world of industrial inter-continental transportation.



Most pallets make their way to Australia on a one way journey carrying products from 'somewhere out there' to 'here', never to return because it costs too much to get them back again. In economic terms, the question is simple: what is the cheapest material these pallets can be made of? For us it would be plantation-grown pine, but we don't enjoy the rapid replenishment growth of the Northern Hemisphere, so we're now looking at a completely different form of cheap or 'disposable' timber.



Pallets set aside for this challenge were of North American origin, selected for two reasons: these pallets cannot be re-used in Australia due to their configuration; and, made of hefty sections of timbers such as Sycamore, Pin Oak, Maple, Ash and Elm (all identified without scientific background, just a working knowledge of timbers) are a minefield of exploration!

Presented with a pile of low grade cheaply sourced material, no matter where it has come from, you need to think hard about what's worth keeping, how you can incorporate low quality material, and how you can adapt ideas to suit the pallets you received.

This Exhibition was a wonderful example of the ingenuity of the 28 makers who accepted the challenge that questions their skills to create works that define origins of material they were presented with.

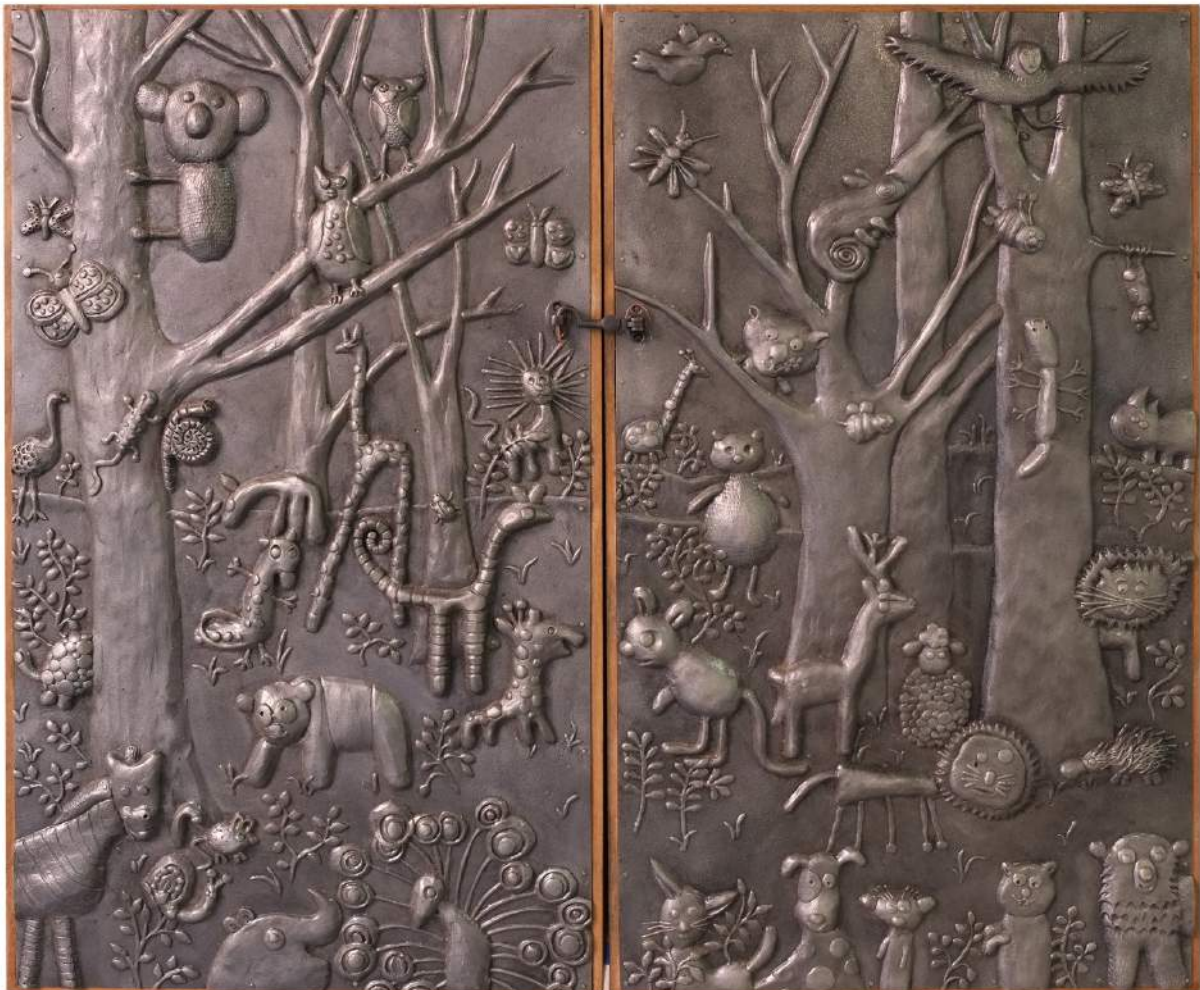
Please visit the VWA website to see images of all the works on display at:

<http://vwa.org.au/exhibitions/create-crate/>.

### **People's Choice Award Winner:**

Over 800 visitors to the Create from a Crate exhibition at both the Ivanhoe and Ballarat venues cast their vote for the People's Choice Award. The winner was Will Matthysen for the Clock 174.

**Kathy Holowko and the Mobile Children's Gallery,  
Royal Children's Hospital, Melbourne.**



A ribbon cutting ceremony took place in Royal Children's Hospital Main Street (the large foyer in the hospital's main entrance) on the 25<sup>th</sup> February 2014, with speeches, cupcakes and art activities for children. This was an opportunity to view the new Mobile Children's Gallery and its first exhibition of children's artwork.

The sculpture is the creation of Kathy Holowko, a Melbourne based artist, known for her installations and interactive artworks. Kathy graduated with distinction from RMIT with a BA, Fine Art (Sculpture) and has since cultivated a role in community art projects involving children while maintaining a professional arts practice based on public art and interactive installation.



Kathy's Mobile Children's Gallery is a structure that can be wheeled beside beds and through wards, functioning as a public exhibition space for patients to explore and create artworks. The cast doors of this sculpture have been made from images that children and young people have created during drawing sessions with the artist. The first exhibition featured a beautiful selection of artwork created by children in the hospital and also includes films and animations on a media screen hidden behind a hinged door.



The Mobile Children's Gallery will become an ongoing exhibition space featuring the wonderful artwork created by patients and enable their work to be shared throughout the hospital.



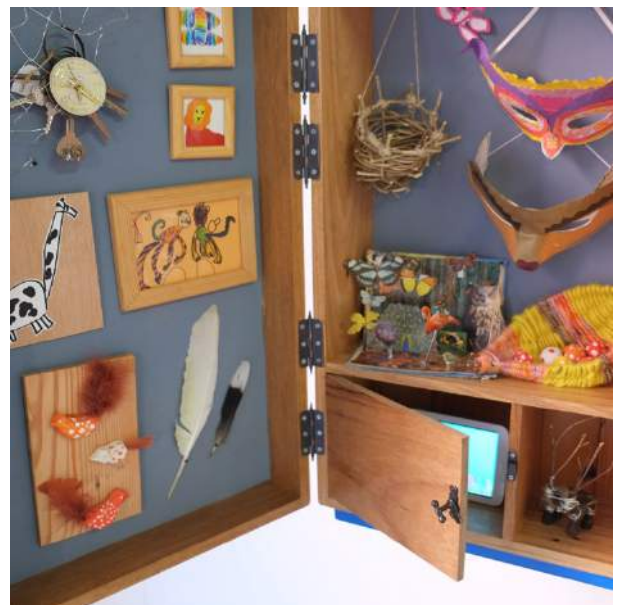
Kathy commenced her project early last year, when she approached Carl Lutz at the VWA's Wood Design Centre, where she attended Carl's evening classes. The cabinets were made from recycled timber; spotted gum for the top opening part, and messmate boards for the base. The opening box-type doors at the top are constructed with hand cut through dovetails and are very finely executed.



In Kathy's own words, the Children's Mobile Gallery is:

"A space where discoveries can be made, it has doors and things that open, it is a gallery space the way I like them, where exploring is welcomed. It is a space that can move, between wards, beside beds. It has wheels and a heart, and my hope is that it brings joy, respite from pain or boredom, creative learning experiences and pride to the children that exhibit their work inside it.

This work is for children but it was also created by children. I spent 3 months visiting the hospital and working with patients. Some needed to come in regularly for treatments, some lived in the hospital for extended periods and some couldn't leave their room or their bed. I was building the structure at the same time and it was a great reminder that these were the kids the Mobile Gallery was for.



We made art together, a simple act but a very lovely one. For some it was an escape, for others a chance to challenge and improve their motor skills and all of them donated their artwork with a generosity of spirit to help other children in the hospital. The inaugural exhibition is a showcase of their skills and talents.

We began with animal drawing sessions that saw a myriad of creatures come to life including my favourite, a 5 legged lion. I had the difficult task of sorting through these images to choose the ones that would become a permanent fixture on the doors of the gallery. I took these drawings and carved them in low relief and then had them cast in aluminium. “

Kathy wishes to acknowledge the support for this project by the Victorian Government through Arts Victoria.

---

## **Add your name to the Custom Work referral service**

As part of the VWA's delivery of services to members, a new service is now live on the VWA Website. The VWA periodically receives requests from the general public for custom work to be completed. Some jobs are small, some jobs are large, some jobs are unusual.

Public requests are made via the form on the "About" page i.e:  
<http://www.vwa.org.au/about/custom-work-request/>

When a request is made it is reviewed by the VWA Secretary, and if it looks reasonable it is approved to be automatically sent to all members who have subscribed to the Custom Work list.

So if you would like to be notified of a work request and pick up some occasional custom work, enter your details on the Custom Work Registration form here:

<http://www.vwa.org.au/members/custom-work/>



## FOR SALE: Used Powermatic DDS-225 Dual Drum Sander - \$1000



From the VWA workshop, North Melbourne.

The four drive lead screws and threaded bushings to adjust the table height need to be replaced.

These machines are currently on sale at Carba-Tec for \$5500 new.

For inspection, please contact the secretary at: [secretary@vwa.org.au](mailto:secretary@vwa.org.au)

## FOR SALE: Jarrah Timber

We have for sale jarrah timber ex our property near Beechworth, Victoria. Jarrah slabs 50mm up to 1.2m wide, 50mm and 28mm Jarrah boards varied widths. All air dried 8 years plus kiln dried. Up to 31 cum available, priced from \$4000 per cubic metre. Contact Harry Kornoff 0497 772 896 for enquiries.

### Current VWA Committee and Contacts:

President	Damien Wright	03 9486 4434
Vice-President	Jerome Wielens	0431 891 451
Treasurer	Rob Allan	03 5776 2178
Secretary	Stephen Farquhar	0419 311 010
Editor	Will Matthysen	0438 984 415
School Sub-committee Chairman	Jerome Wielens	0431 891 451
Exhibitions Co-ordinator	Libby O'Brien	0430 500 420
Committee Member	John Monument	0417 119 946
Committee Member	Andrew Potocnik	0419 875 811
Committee Member	Mark Wakeham	0400 102 551
Committee Member	Sam Johnston	0404 520 680
Committee Member	Randall Kohn	0438 132 644
Committee Member	Stephen Zигuras	0405 668 779

VICTORIAN WOODWORKERS ASSOCIATION INC  
 A0011687U ACN A0011687U ABN 67 178 950 979  
 Incorporated 11 November 1986